

深圳市普禄科智能检测设备有限公司

PITE·皮特
PITE TECH. INC.

PITE 皮特
营销中心
Sales Department

PITE 皮特 PITE 皮特

PITE·皮特



PITE TECH INC was established in 2001 with a registered capital of 13.29 million RMB. It is a national-level high-tech enterprise with core technologies and patents, as well as software and hardware R&D, production and sales capabilities. At the beginning of our business, we focused on manufacturing portable intelligent testing instruments. After continuous development and precipitation, just as the spring breeze of the Internet was blowing across the land of China, we began to turn to the research of the Internet of Things detection platform. Using artificial intelligence and big data platform, through the Internet of Things technology, to carry out the life-span safety management of the battery, and provide a comprehensive service platform for distributed energy management.

Through years of talent accumulation, we have built a professional team with doctoral supervisors, professor-level senior engineers, doctors and masters as the core. There are 8 departments including R&D department, engineering department, production department, marketing department, general manager's office, purchasing department, finance department, and customer service department. The existing plant covers an area of 2,000 square meters and has more than 120 employees. At the same time, our company attaches great importance to the protection of intellectual property rights, and now has 11 invention patents, 15 utility model patents, and 11 software copyrights.

PITE TECH INC

2/F, Bldg E, Chiwan Industrial Park,
Nanshan, Shenzhen, China
sales@pitetech.com
www.pitetech.com





PITE is our own brand. After several years of development, the products have been widely used in many industries such as communications, electric power, railways, aviation, petroleum, finance, machinery manufacturing, radio and television stations. Our products are not only well-known in China, but also exported to Southeast Asia, Europe, North America and South America, etc., with annual sales of more than 50 million yuan. The service tenet of "Durable Leather, Customized Features" is well-known, and Pete has become one of the world's well-known brands in the intelligent testing instrument industry.

Our products and services include:

- Power equipment (including batteries) maintenance and distributed energy management cloud platform
- Intelligent testing equipment for DC power supply (including battery)
- AC system power quality and intelligent testing equipment
- Intelligent testing equipment for railway locomotive testing and maintenance



Battery Tester

Model: PITE3915

Regular maintenance and test is a “must-have” procedure for standby batteries. It is also recommended by IEEE latest standard for maintenance and testing of standby batteries. The excellent performance of PITE3915 for testing cell internal resistance and voltage will help you eliminate the weak batteries and ensure their performance. Regular maintenance and test is a “must-have” procedure for standby batteries. It is also recommended by IEEE latest standard for maintenance and testing of standby batteries. The excellent performance of PITE3915 for testing cell internal resistance and voltage will help you eliminate the weak batteries and ensure their performance



Technical Specifications

- Wide test range: 5~6000Ah, compatible for cell of 1.2V, 2V, 6V and 12V
- Smart and portable hand-held device, rugged and easy-to-go
- Colorful touch screen with optional operations of keyboard and touch screen
- Simultaneously test voltage and internal resistance/conductance
- Fast testing for battery and string in seconds with testing data auto saving
- Strong anti-interference in high current with stable and accurate performance
- Low testing frequency, effectively avoid interference from capacitive resistance
- Direct USB drive for software update and data transfer to computer
- Big memory for testing data storage of more than 3000 cells
- Buzzer alarm function and over voltage protection
- Auto-calibration function before testing enhances the testing accuracy
- Build-in reference value and self-defined value for comparison of testing result
- Retest and compensation function: any faulty operation or omission could be retested simply with one click
- Powerful software on PC to view the test data on many ways or export directly to Microsoft Excel

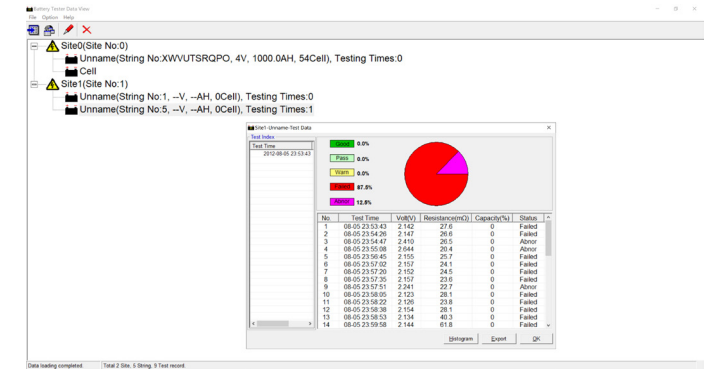
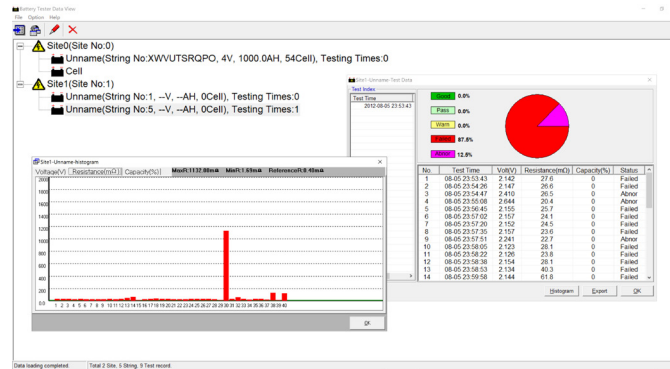
Voltage Range	0.000V-16V
Resistance Minimum Test Resolution	0.1 mΩ
Voltage Minimum Test Resolution	1 mV
Resistance Test Accuracy	±1.0%rdg±6dgt
Voltage Test Accuracy	±0.2%rdg±6dgt
Power Supply	Li-ion battery(7.2V 2400mAh)
Working Time	More than 5 hours
Measuring Data Memory	>3000 cells
Operation Environment	0°C to 40°C, 90% R.H
Measuring Cells Per String	1≤cells≤254
LCD Display	320*240 pixel, 3.5" TFT Screen
Net Weight	2 kg
Dimension	L210*W110*H60 mm

*The standard package come with Probe Pin and Test Clamp, you can use either of them to conduct your test conveniently



Data View Software

The included DataView software allows the user to upload test data from the provided USB drive. Then you can category and save the data on PC, view the data detail in form or Graphs or download it directly to Microsoft Excel



Type	String Name	Unname
--V --AH		

No.	Voltage(V)	Resistance(mΩ)	Capacity(%)	Status
18	2.165	34.4	0	Failed
19	2.164	26.9	0	Failed
20	2.164	26.2	0	Failed
21	2.151	22.5	0	Failed
22	2.151	12.5	0	Failed
23	2.159	12.4	0	Failed
24	1.922	1.69	21	Failed
25	2.282	12.1	0	Abnor
26	2.142	27.4	0	Failed
27	2.147	26.6	0	Failed
28	2.439	26.1	0	Abnor
29	2.644	26.1	0	Abnor
30	2.155	15.7	0	Failed
31	2.137	24.1	0	Failed

Kit Includes

- PITE3915*1
- Test Clamp*1
- Probe Pin*1
- Charging Adaptor*1
- USB Converter*1
- 4G USB Flash with software*1
- User Manual*1
- Packing List*1
- Carry Bag*1





CERTIFICATE OF CONFORMITY

No.: EBO1804058-V151

The following product has been tested by us with the listed standards and found in conformity with the European directive EMC 2014/30/EU.

Applicant: PITE TECH. INC.

Address: 4/F, Bldg A, Chiwan Industrial Park, Shaodi Rd., Chiwan, Shekou Area, Shenzhen, China

Manufacturer: PITE TECH. INC.

Address: 4/F, Bldg A, Chiwan Industrial Park, Shaodi Rd., Chiwan, Shekou Area, Shenzhen, China

EUT: BATTERY TESTER

Model No.: PITE 391X(X=0-9)

Test Report No.: EBO1804058-E150

Sufficient samples of the product have been tested and found to be in conformity with

Test Standards: EN 61326-1:2013
EN 61000-3-2:2014
EN 61000-3-3:2013

The test report was carried out from submitted type samples of a product in conformity with the specification of the respective standards. The CE mark as shown below can be used, under the responsibility of the manufacturer, after completion of an EC Declaration of Conformity and compliance with all relevant EC Directives.


 Kevin Wang
 Laboratory Manager
 Issue Date: May 23, 2018




 DUE DATE: 2018.06.21

Shenzhen EBO Testing Center
A506, Financial port building, Xin'an Sixth Road, 82nd District, Bao'an, Shenzhen, China.
Tel: 86-755-33126608 ebo@ebotest.com www.ebotest.com

Ground Fault Locator

Model: PITE3836

The PITE3836 Ground Fault Locator is an essential instrument to identify faulty grounding where electrical cables have breakage and loss to the ground. The unit identifies the inadvertent ground by injecting a low frequency signal on the faulted polarity. By following the signal using the current clamps and the portable receiver, the physical location of the ground fault can be found. Measurement of online DC systems is possible as the output current of the PITE3836 is very low but the output voltage can be up to 1000V.

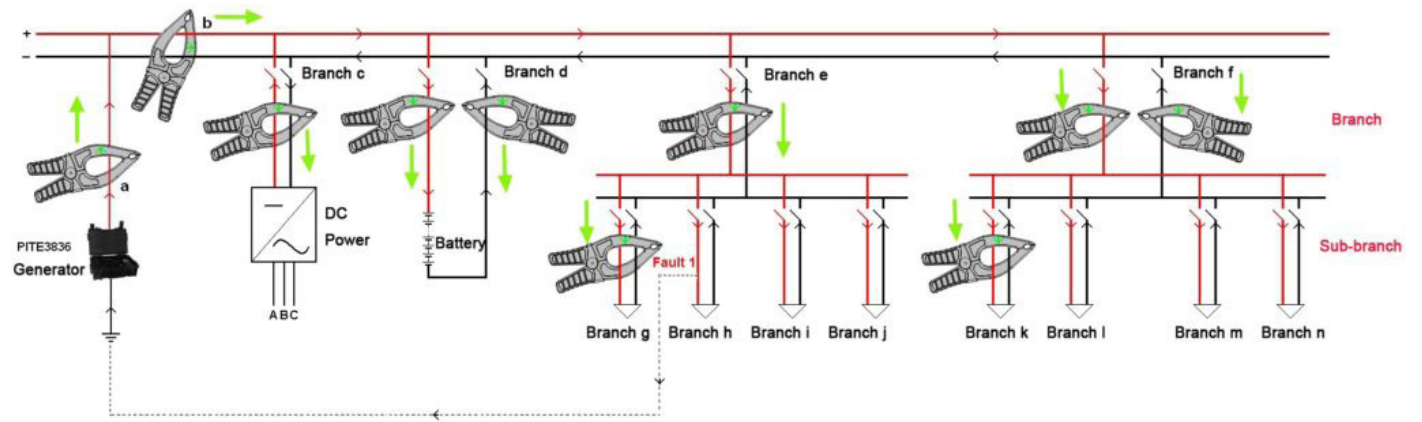
Compliance with NERC PRC-002-6 requires that the battery and DC power system be inspected for inadvertent grounds every four months. If a ground fault exists the PITE3836 is the tool by which that fault can be located without the need to de-energize the live circuit



Technical Specifications

Output Voltage:	24, 48, 110, 220, 500, 1000 VDC
Output Frequency:	10 Hz
Output Current Limitation:	5 mA or Unlimited (Max 25mA)
Fault Location Sensitivity:	$\leq 1 \text{ M}\Omega$
Current Detect Sensitivity:	AC/DC Circuit: $\geq 0.5 \text{ mA}$
Quick Search Clamp:	55 mm (diameter), 60 mm (jaw opening)
Current Sensor:	$\phi 8$ and $\phi 20$
Jaw Opening:	60 mm (2.36 in)
Display:	Backlit Color LCD
Operating Environment:	Temperature: $-5 - 40 \text{ }^\circ\text{C}$ ($23 - 104 \text{ }^\circ\text{F}$)
Power Requirements:	8.4 VDC Li-ion Battery
Dimensions:	360 x 260 x 135 mm (14.2 x 10.2 x 5.3 in)
Weight:	7 kg (15.4 lbs)

- Patented technology, pinpoint current leakage fault with grounding resistance lower than $1\text{M}\Omega$
- Innovative dual-clamp for signal receiver, each clamp has two sizes of opening jaw for different conductors
- One pair of clamp working together, effective cancel capacitive interference when DC system is online
- Precise current direction (positive or reversed) indicating for leaking current help fast locate the faulty grounding
- 10Hz output frequency on signal receiver effectively avoids interference from DC system itself
- Signal receiver can set reference in different points for signal comparison, very fast for fault orientation
- Digital signal processing technology for detecting grounding resistance and capacitive resistance
- With built-in band pass filter to bypass different interference signals in the ambient environment.
- No disconnection of the electrical installation, ground fault location is carried out during operation
- Frequency spectrum analysis can test ambient frequencies, which helps analyze the surrounding environment.
- Signal generator with adjustable output voltage (24V~1000V) for different DC systems
- Multi-ways to indicate ground fault: sensitive current direction, phase angle, comparison of signal strength.



CERTIFICATE OF CONFORMITY

No.: EBO1907106-V201

The following product has been tested by us with the listed standards and found in conformity with the European directive LVD 2014/35/EU.

Applicant: PITE TECH. INC.
Address: 4/F, Bldg A, Chiwan Industrial Park, Shaodi Road, Shekou Area, Shenzhen, China
Manufacturer: PITE TECH. INC.
Address: 4/F, Bldg A, Chiwan Industrial Park, Shaodi Road, Shekou Area, Shenzhen, China
EUT: GROUND FAULT LOCATOR
Brand Name: PITE
Model No.: PITE3836
Test Report No.: EBO1907106-E200
 Sufficient samples of the product have been tested and found to be in conformity with
Test Standards: EN 61010-1:2010+A1:2019

The test report was carried out from submitted type samples of a product in conformity with the specification of the respective standards. The CE mark as shown below can be used, under the responsibility of the manufacturer, after completion of an EC Declaration of Conformity and compliance with all relevant EC Directives.

Kevin Wang
 Kevin Wang
 Laboratory Manager
 Issue Date: July 24, 2019



Shenzhen EBO Testing Center
 3/F, Building A, Cinye Business Center, Xixian Sixth Road, 22th District, Bao'an, Shenzhen, China.
 Tel: 86-755-33126608 ebo@ebotest.com www.ebotest.com

PITE3836 uses comprehensive ways to pinpoint the faults with the following working rules:

- Signal generator has two testing leads connected with DC system. And it injects a low-frequency current signal with direction to the DC system. This signal will flow from testing lead to circuit, outflow from the faulty grounding point and finally flow back to the signal generator. This makes a return circuit that will be useful for signal tracing in the next step.
- Signal receiver will trace this current signal with the help of current direction judgment. Direction of current signal always goes to the faulty point. With one clamp on two busbars or two clamps respectively on two busbars, it could work effectively with strong anti-interference when system is online.
- Strength and phase angle of current signal will have big changes before and after the grounding fault. They also help pinpoint the fault.

Kit Includes

- PITE3836 Signal Generator
- Power Adapter
- Qty. (2) Signal Testing Leads
- Qty. (2) Alligator Clips
- Punctuation Clip
- Signal Receiver
- Qty. (2) Dual-Range Current Detector
- Qty. (2) Batteries
- 120/220 50/60 Hz Battery Charger
- Carrying Case

Battery Load Bank

Model: PITE3980

PITE3980 DC load banks are designed for user ease of use, portability, and versatility in mind. Discharge testing batteries is the only verifiable method the capacity of your batteries and the PITE3980 delivers a programmable, constant current load for your testing needs. Whether you are load testing for capacity, performance, acceptance, NERC compliance, or other, the PITE3980 provides an economical complete package solution. Increase employee and battery system safety with PER CELL monitoring and standard built in auto-shutdown features. To suit a variety of industries and diverse applications, we offers over 75 standard models to fit your exact needs at the best price

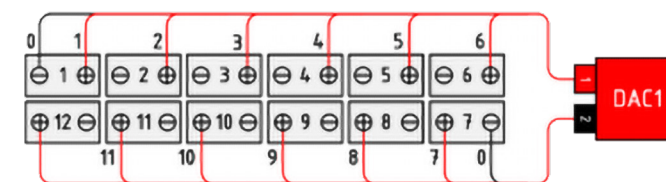
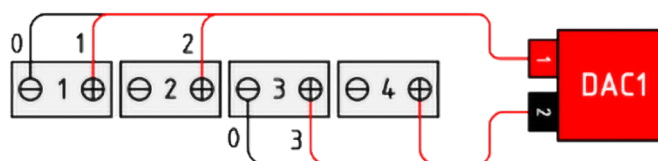


Data Acquisition Case (DAC):

PITE PITE3980 Load Banks come with an optional DAC package allowing the voltage of EACH CELL to be wirelessly monitored and recorded during discharge. The DAC package allows the user to evaluate the health of each cell and replace only the cells that require replacement - saving time and money by significantly reducing labor hours and replacement costs



Data Acquisition Case (DAC)

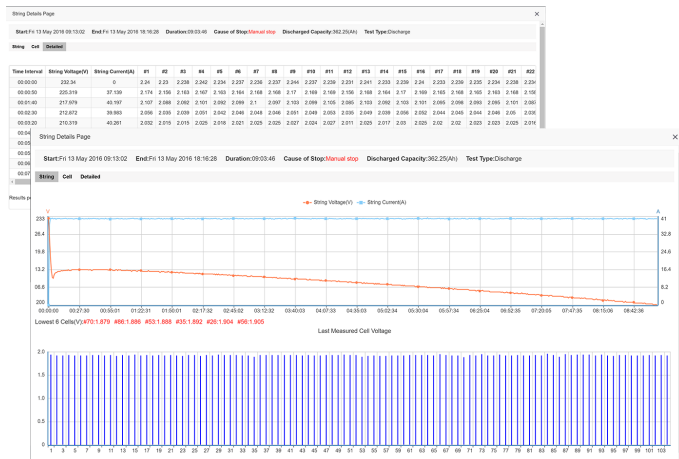


Typical connection of DAC's to the battery cells include a test lead connected to each cell from the DAC. Each DAC can connect up to 12 cells. DAC's are expandable to any size battery system and are compatible with VRLA, VLA, NiCad, and other battery types.

- Safely monitor live tests remotely with wireless communication to the LB load bank
- DataView software includes live monitoring, data recording, and report exporting to Microsoft Excel
- Discharge auto-shutdown for time duration, total string voltage, capacity, and individual cell voltage
- Parallel with another LB-Series unit for increased discharge current capacity
- Assistant discharge feature allows for compatibility with existing nonLB load banks
- Increase current and add individual cell monitoring to your existing equipment with LB-Series
- Built-in circuit breakers for emergency shutdown and overload protection
- Optional: Real-time display of voltage for each cell/unit with DAC package for 1.2V, 2V, 6V, 12V cells
- Optional: Custom DAC packages available for monitoring of uncommon cell voltages and configurations

Technical Specifications

Cell Voltage:	Standard DAC: 2V, 6V, 12V
Discharge Current Range:	Single Load: 12 – 600A / Parallel Load: Up to 1200A
Discharge Voltage Range:	Range: 10 – 576V (Max) / Voltage Steps: 12V, 24V, 36V, 48V, 80V, 125V, 240V, 380V, 480V
Accuracy:	Discharge Current: 1% / Voltage: 0.5% – 0.8%
Resolution:	Discharge Current: 0.1 A or 0.5% / Voltage: 0.001 V
Sampling Interval:	seconds – 1 minute
Data Transfer:	USB, Wireless (466 MHz)
Display:	Backlit LCD
Operating Environment:	– 40 °C (32 – 104 °F)
Power Requirements:	110/220 VAC 50/60 Hz / DC (from connected batteries)



Data View Software

The included DataView software allows the user to monitor the discharge test in real-time or import and view tested data from the load bank with the provided USB drive. View and print a detailed histogram of each cell's voltage from any point during the discharge test at user defined intervals of 15, 30, or 60 minutes.

Recorded data exports directly to Microsoft Excel. Users are able to customize their report with company name and location as well as input battery information including battery make, cell type, rated capacity, and more. The complete test criteria, weakest cells, string information, and individual cell information are included in the report. Graphs for string, and cells are also available to view in the software.

LB-Series Standard Models

*Custom models available upon request

To fit our customer's exact needs from a variety of industries and diverse applications, we offers over 75 standard load bank models, each model have its own size, discharge current and voltage capability, such as LB48V-300A could discharge 48V battery pack with 0-300A constant current, LB125V-100A could discharge 125V battery pack with 0-100A constant current, you only need to chose the right model based on the discharge voltage and current capacity you need, you are also welcome to contact us anytime to get the best support and quote

LB12/24V-400A	LB28V-150A	LB125V-100A
LB24V-300A	LB28V-300A	LB125V-200A
LB24V-400A	LB28V-500A	LB125V-300A
LB24V-500A	LB48V-150A	LB125V-400A
LB24/36V-100A	LB48V-300A	LB125V-500A
LB24/36V-300A	LB48V-400A	LB125/240V-100A
LB24/36/48-300	LB48V-500A	LB125/240V-150A
LB24/36/48/80V-200A	LB48/125V-100A	LB240V-150A
LB24/48V-200A	LB48/125V-200A	LB240V-200A
LB24/48V-300A	LB48/125V-300A	LB380V-50A
LB24-300A/48V-600A	LB48/240V-100A	LB380V-100A
LB24/48V-600A	LB80V-100A	LB480V-100A
LB28V-100A	LB80V-200A	

CERTIFICATE



CERTIFICATE OF CONFORMITY

No.: EBO1804058-V154

The following product has been tested by us with the listed standards and found in conformity with the European directive EMC 2014/30/EU and LVD 2014/35/EU.

Applicant: PITE TECH. INC.
Address: 4/F, Bldg A, Chiwan Industrial Park, Shaodi Rd., Chiwan, Shekou Area, Shenzhen, China
Manufacturer: PITE TECH. INC.
Address: 4/F, Bldg A, Chiwan Industrial Park, Shaodi Rd., Chiwan, Shekou Area, Shenzhen, China
EUT: LOAD BANK
Model No.: PITE 3932T, PITE 398X(X=0-9)
Test Report No.: EBO1804058-E152
 EBO1804058-E153

Sufficient samples of the product have been tested and found to be in conformity with

Test Standards: EN 61326-1:2013
 EN 61000-3-2:2014
 EN 61000-3-3:2013
 EN 61010-1:2010

The test report was carried out from submitted type samples of a product in conformity with the specification of the respective standards. The CE mark as shown below can be used, under the responsibility of the manufacturer, after completion of an EC Declaration of Conformity and compliance with all relevant EC Directives.

Kevin Wang
 Kevin Wang
 Laboratory Manager
 Issue Date: May 29, 2021



Shenzhen EBO Testing Center
 A506, Financial port building, Xin'an Sixth Road, 82nd District, Bao'an, Shenzhen, China.
 Tel: 86-755-33126608 ebo@ebotest.com www.ebotest.com

Kit Includes

- PITE3980 Load Bank
- DataView Management Software
- Carrying Case (for small & medium size models)
- Set of 3m/10ft Load Cables
- 3m/10ft Voltage Test Leads
- PC communication interface

- Ground Cable
- AC Power Cord
- USB Drive with Software/User Manual
- (2) Antenna
- Optional: Standard DAC Package
- Optional: CT Clamp for Assisted or External Load Testing
- Optional: Parallel Load Cable